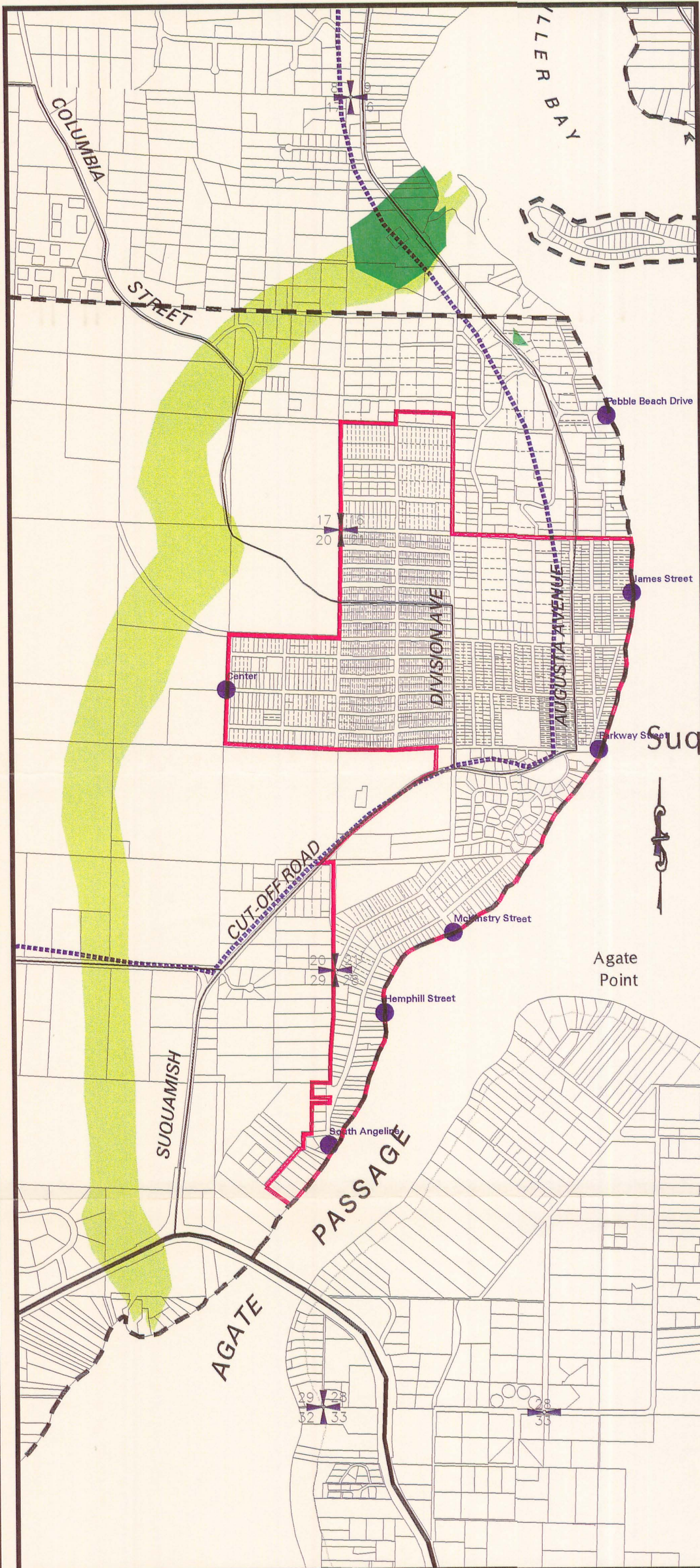


# SUQUAMISH Washington

Prop. Open Space Overlay

Figure 13

APRIL 19, 1999



- Public Road Ends
- Proposed Open Space Areas (1994 Kitsap County Parks Plan)
- Proposed Natural System Corridors (1994 Kitsap County Parks Plan)
- Proposed Natural System Corridors (1993 Kitsap County Greenways Plan)
- Public Beachline
- - - Proposed Hiking Trails (1994 Kitsap County Parks Plan)
- ... Proposed Horse Trails (1994 Kitsap County Parks Plan)
- · - · Proposed Multipurpose Trails (1994 Kitsap County Parks Plan)
- - - Proposed Offroad Trails (1993 Kitsap County Greenways Plan)
- - - Platted Lot Lines (not necessarily divisions of ownership of tax parcels)
- Suquamish Rural Village Boundary
- Ownership Parcels
- Federal Indian Reservations
- Principal Arterials
- Minor Arterials
- Collectors
- Rail

Scale: 1" = 1,200'

Kitsap County Department of Community Development  
614 Division Street, MS-36, Port Orchard, Washington 98366  
(360) 337-7181 \* FAX (360) 337-4925  
Product of Kitsap County Geographic Information System  
Printed May 07, 1999

