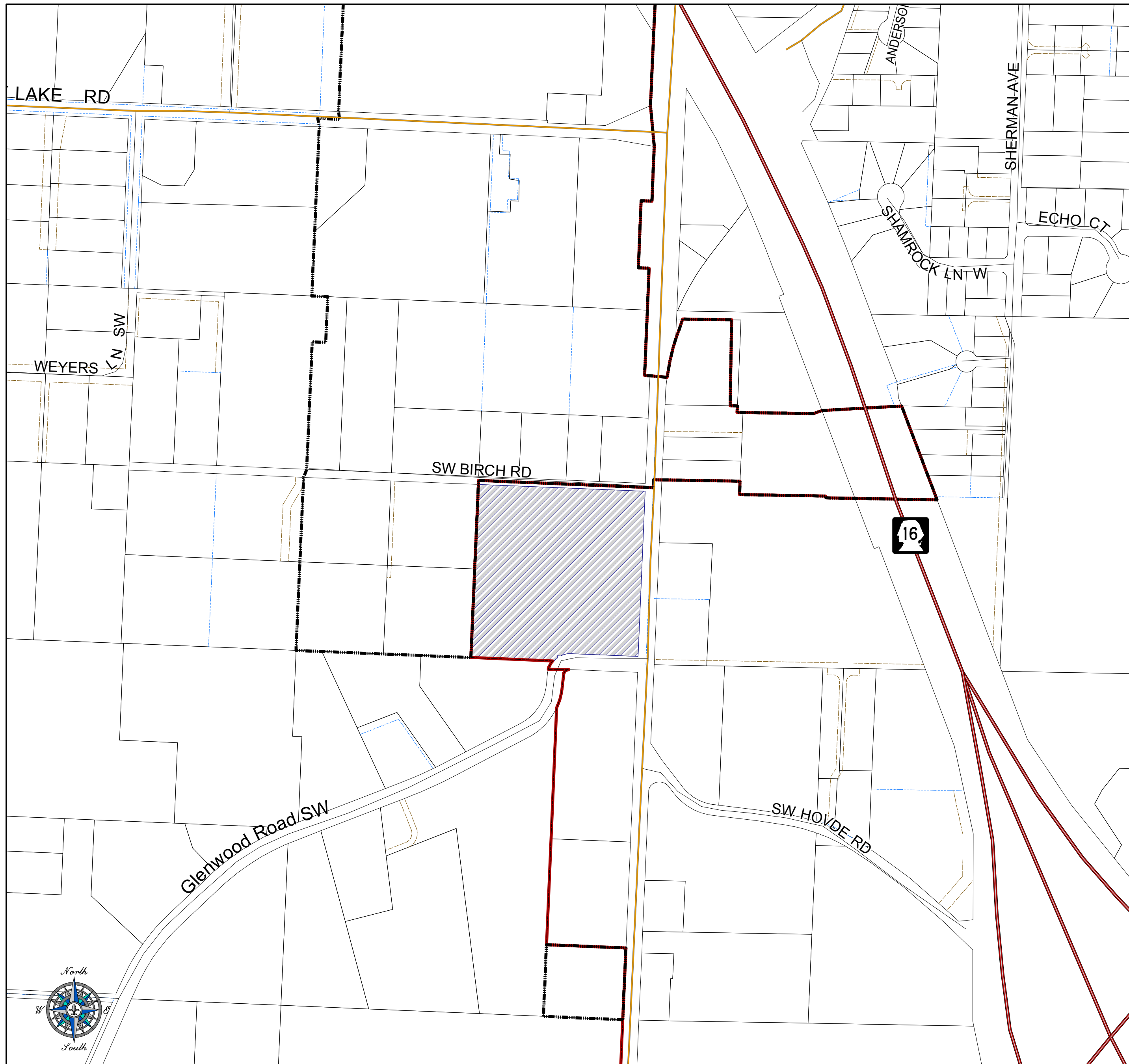


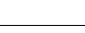


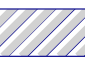



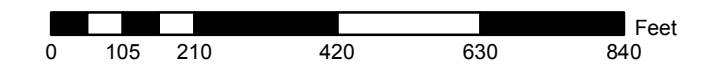
Port Orchard Annexation - Sidney Glen



-  State Highway
-  Arterial
-  Collector
-  Easement
-  Plat Line
-  Annexation Parcel
-  Tax Parcels



Kitsap County Department of Community Development
 614 Division Street, MS-36, Port Orchard, Washington 98366
 VOICE (360) 337-7181 * FAX (360) 337-4925



City of Port Orchard Annexation Ordinance No. 019-10 October 10, 2010

This map was created from existing map sources, not from field surveys. While great care was taken in using the most current map sources available, no warranties of any sort, including accuracy, fitness, or merchantability accompany this product. The user of this map assumes responsibility for determining its suitability for its intended use.

*** THIS MAP IS NOT A SUBSTITUTE FOR FIELD SURVEY ***

DRAFT

Map Date: January 2011

