

# Kitsap County Public Works

## Schold Farm Wetland Restoration

### Focus on: Silverdale YMCA Mitigation Project

#### Overview

The Schold Farm property is located north of Silverdale between Highway 3 and Clear Creek. Originally a wetland area, the land was historically ditched and drained for agricultural uses. Kitsap County purchased the land in 1994 for use as a wetland mitigation bank to restore the area's previous wetland habitat and hydrology.

Several mitigation projects have been constructed on the farm since that time, yet there was a need for a comprehensive mitigation strategy to coordinate and prioritize restoration efforts. In 2009, the Kitsap Conservation District prepared the Schold Farm Restoration Plan. The goal for this strategy is to create a fully functional wetland and stream habitat with amenities for passive recreation and environmental education.

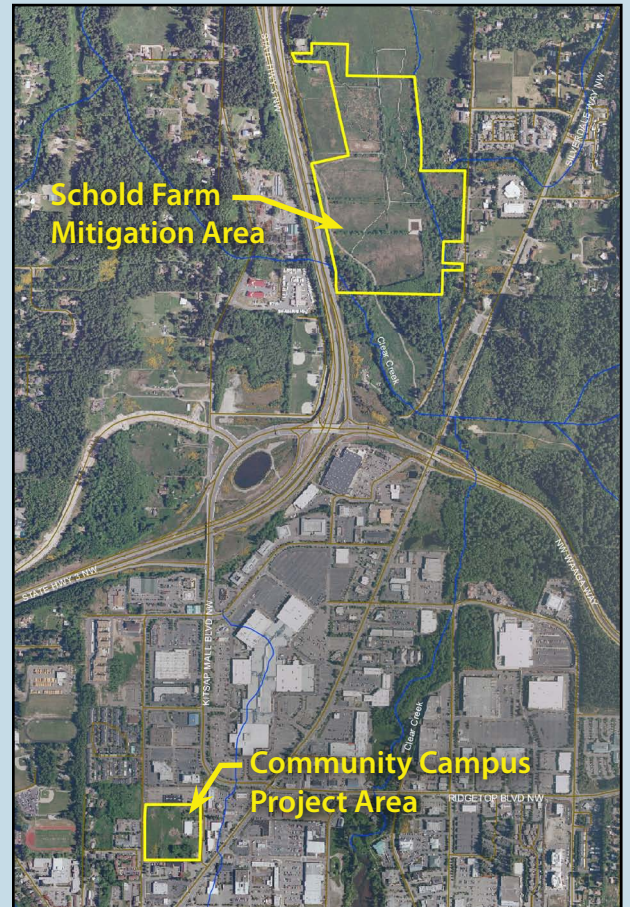
#### Case study: The Silverdale YMCA Mitigation Project

The Central Kitsap Community Campus is growing. Kitsap County developed an adjacent parcel to allow for additional civic and public uses, including the new Silverdale YMCA. Two wetlands found on the project site were filled in order to expand the Community Center.

Impacts due to the loss of these wetlands were mitigated through approximately 61,503 square feet of wetland creation and enhancement on the Schold Farm mitigation site. The created and enhanced wetlands are more ecologically valuable than the existing wetlands on the Community Center project site, resulting in an overall net gain of wetland functions in the Clear Creek drainage basin.



Schold Farm restoration site



Two culverts were removed at the north end of the wetland creation area, joining two ditches and creating a new fish-friendly channel. A third culvert was removed at the south end of the wetland creation area. Aerial photo Courtesy of Rushforth Construction, Image by SkiPix Aerial Photography



For more information, contact  
Kitsap 1 at (360) 337-5777 or visit [www.kitsapgov.com/sswm](http://www.kitsapgov.com/sswm)